

ashirvad[®]

uPVC Non Corrosive, Hi-tech, Hi-tensile
Available in 25mm to 125mm diameter

Column Pipes for submersible pump



Square Threads

The **grip design** of Square Threads gives a high tensile load capacity and for easy fitment and **re-fitment**.

Only Ashirvad has this powerful grip design.

Special Threading

APPL employs specially imported CNC machines with special tools to ensure perfect dimensions and good & easy fitment of threads.



'O' Ring

The 'O' ring, sealant and gripping system provides leak proof fitting and also absorbs the vibrations of the pump. Resulting in extended life of motor and pump bearings.

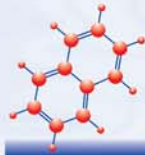
Only Ashirvad has unique gripping system.



PVC PIPE JOINT SYSTEM WITH
COUPLER & **WIRESLOCK™**
For Extra pump safety
Design Registered Patent Registered

In this unique wirelock system developed by APPL, the coupler (1" & above) is fitted to the pipe and locked with special stainless steel wire, thus eliminating the chances of coupler loosening & column slipping during dismantling process & also excessive tightening of coupler with pipe.

now with
BIAX™
TECHNOLOGY
for super strength



This technique has been developed for the first time in India by APPL, wherein the PVC molecules get linearly & diametrically oriented during the process, resulting in higher impact strength.



Pump Guard

Technically designed Pump Guard ensures that the pump does not fall, which in turn saves the tubewell.

Only Ashirvad has additional safety.

Wide range to suit different pump delivery heads.

Technical Details	Pipe Size	25mm	32mm	40mm	50mm	65mm	80mm	100mm	125mm
Safe Total Pump Delivery head in meters	V4 - 15	150	150	150	-	-	-	-	-
	Medium	-	-	-	130	100	110	100	100
	Crystal	210	210	210	170	-	-	-	-
	Standard	300	250	260	200	160	170	150	160
	Heavy	-	350	350	270	260	260	260	260
	Super Heavy	-	-	-	350	350	350	350	350

We can manufacture other pressure rating pipes upon your request

Technical Details	Pipe Size	25mm	32mm	40mm	50mm	65mm	80mm	100mm	125mm
Load capacity in pulling with chain pulley arrangement for submersible pump pipes (kg)	V4 - 15	700	1000	1200	-	-	-	-	-
	Medium	-	-	-	1500	1900	2750	4100	6100
	Crystal	1000	1100	1400	1700	-	-	-	-
	Standard	1300	1500	1700	2100	2700	4000	5700	9000
	Heavy	-	1550	2000	2850	4200	5700	9500	13800
	Super Heavy	-	-	-	3500	4900	6800	11300	17400

For more details kindly refer technical manual

Technical specifications subject to change without prior notice

ASHIRVAD RANGE OF PRODUCTS

- CPVC pipes & fittings
- uPVC Solvent Weld Plumbing system

Always First Always Best

ashirvad[®]



Join the Metal connector with Submersible pump with the help of chain wrench



Before joining the ashirvad pipes, ensure to clean the threads with clean water.



Before joining the pipes ensure that the Pump Guard is installed properly.



Before opening or joining the pipe/adopter ensure to hold the coupling by hand.



Tighten ashirvad pipe till half rubber ring is seen with hand and last jerk with rope if required.



At the time of lowering Ashirvad pipes place the clamp below the coupler. Clamp the top adopter with the last pipe.



Lower ashirvad pipes with the help of chain pulley.

More than
10,00,000

Successful
Installations
Throughout India